

COCHRANE REHABILITATION FIELD: ADVANCING EVIDENCE BASED MEDICINE PRACTISE IN REHABILITATION COMMUNITY

Julia P Engkasan¹, Stefano Negrini², Carlotte Kiekens³, Elena Ilieva⁴, William Levack⁵, Antti Malmivaara⁶, Francesca Gimigliano⁷, Frane Grubisic⁸, Farooq Rathore⁹, Chiara Arienti¹⁰, Tracy Howe¹¹, Thorsten Meyer¹²

1. University of Malaya, Malaysia 2. University of Brescia, Italy 3. University Hospitals Leuven, Belgium 4. Plovdiv Medical University, Bulgaria 5. University of Otago, New Zealand
6. Institute for Health and Welfare, Finland 7. University of Campania "Luigi Vanvitelli", Italy 8. University Hospital Centre, Croatia, 9. PNS Shifa Hospital, Pakistan 10. IRCCS Don Carlo Gnocchi Foundation, Italy 11. Glasgow Caledonian University, UK 12. University of Bielefeld, Germany

BACKGROUND

A group of rehabilitation professionals collaborated to develop the Cochrane Rehabilitation Field (CRF). Cochrane formally approved the establishment of the CRF on October 22nd, 2016. Cochrane Rehabilitation was launched on the 16th December 2016.

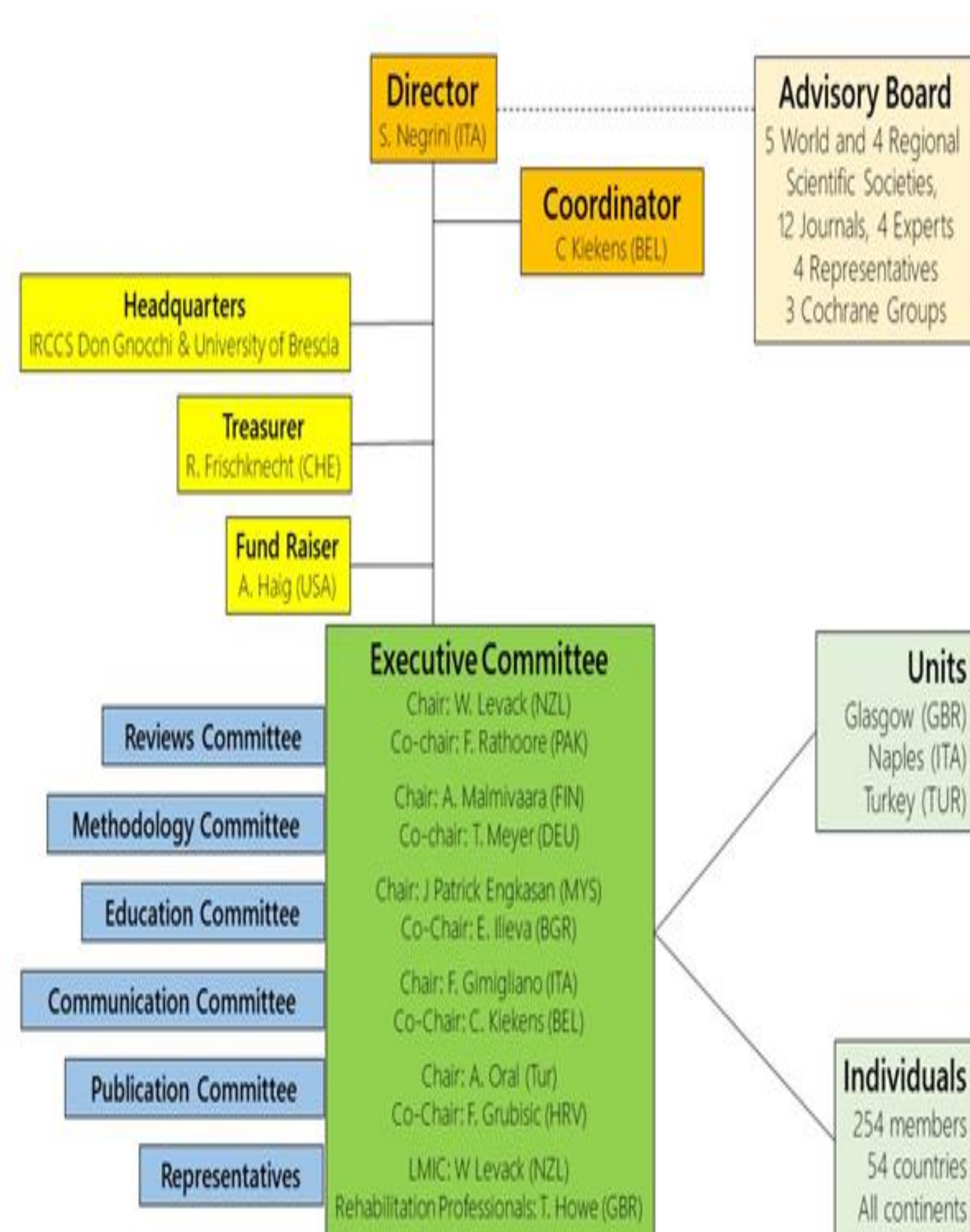
OUR GOALS



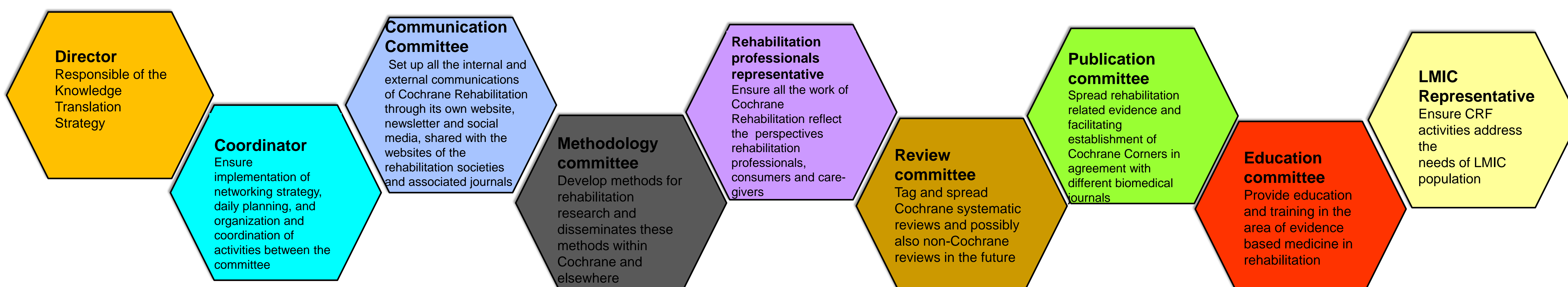
OUR VISION

All professionals in rehabilitation can practice an evidence-based approach, combining the best available evidence as gathered by high quality Cochrane systematic reviews, with their own clinical expertise and the values of patients.

ORGANIZATIONAL CHART



OUR ROLES



CONTACT / FOLLOW US FOR MORE INFORMATION

Julia P Engkasan Email: julia@ummc.edu.my

Email: cochrane.rehabilitation@gmail.com

Twitter: @CochraneRehab

Facebook: CochraneRehab